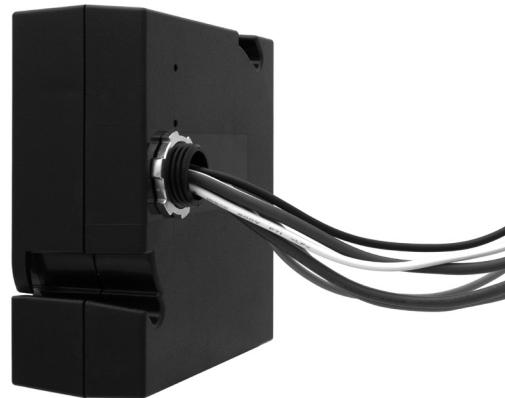


DRC 0-10V Smart Pack

Providing 0-10V Single Channel Zone Control



DESCRIPTION

The DRC 0-10V Smart Pack enables switching and 0-10V dimming control of a single zone of fixtures, allowing for a distributed control solution. Used to control multiple fixtures in a zone or for plug load control solutions, the DRC uses distributed relays, which eliminates the need to run wires back to the cabinet. This distributed system architecture saves on installation and equipment costs. DRC relays can be used as a normal or emergency relay; a remote relay with the GreenMAX® System; or as a single room control relay with the Sapphire™ Touch Screen.

APPLICATIONS

- Single channel LumaCAN 0-10V relay
- Distributed controls
- GreenMAX® remote relay
- Direct load control from Sapphire™

FEATURES

- Single channel device—(1) 0-10V output plus (1) relay
- Plug load controls
- UL924 Emergency
- Utilizes Leviton High Inrush Stability (H.I.S.) circuitry for increased reliability
- Metering relays—data is provided over BACnet through connected device
- Connects via the LumaCan network via RJ45 connectors and CAT6 wiring
- 0-10V control can be Class 1 or Class 2 wiring
- Used for both switching only loads and dimming loads, controllable with a 0-10V control signal
- All relay models are latching, with manual actuator to reduce parasitic energy waste over NO/NC relays

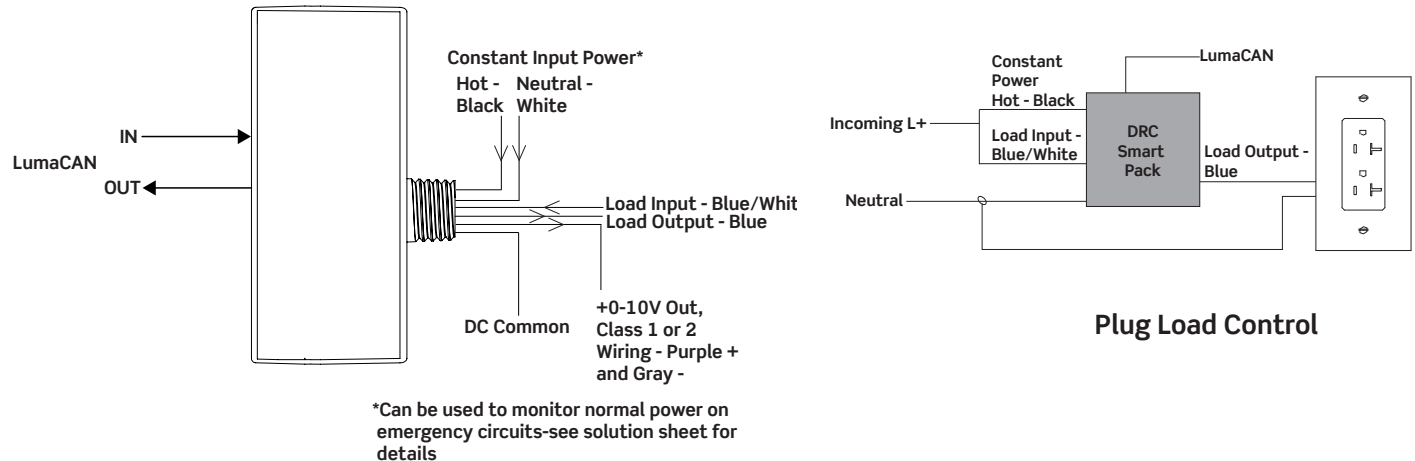
INSTALL NOTES

- Installs to 4" square electrical box or via 1/2" nipple
- When Class 2 In Conduit is required, use 4" square extension ring and blank cover on low voltage side
- May be field-painted to match surroundings (requires 45 blank cover to protect Class 2 side)

PRODUCT DATA



WIRING DIAGRAM



SPECIFICATIONS

ELECTRICAL	
Input Voltage	120-277VAC, 50/60 Hz, 20A Max
Standby Power	0.5W
Supported Loads	16A Tungsten 16A Resistive 20A Ballast 16A Electronic Ballast 16A LED Drivers 20A General Purpose/Plug Load Control Motor
Control Output	0-10V, 100mA sinking, Class 1 or Class 2 wiring
Network requirements	LumaCAN network input and output, RJ45 connectors
ENVIRONMENTAL	
Operating Temperature	23-122°F (-5-50°C)
Storage Temperature	4-185°F (-20-85°C)
Ambient Humidity	0-90% non-condensing
Listings	IEC61000-4-2, UL 2043(Plenum), UL 924 (Emergency bypass), cUL, ETL, NOM certified, FCC, Chicago Plenum rated

ORDERING INFORMATION

CAT. NO.	DESCRIPTION
DRD07-ED0	DRC Smart Pack, 0-10V, 120-277VAC, 50/60Hz 20A max, 100mA sink current

Leviton Manufacturing Co., Inc. Energy Management, Controls and Automation

20497 SW Teton Avenue, Tualatin, OR 97062 tel 800-736-6682 fax 503-404-5594 tech line (6:00AM-4:00PM PT Mon-Fri) 800-959-6004

Leviton Manufacturing Co., Inc. Global Headquarters

201 North Service Road, Melville, NY 11747-3138 tel 800-323-8920 fax 800-832-9538 tech line (8:30AM-7:00PM ET Mon-Fri) 800-824-3005

Visit our Website at: www.leviton.com/sensors

©2016 Leviton Manufacturing Co., Inc. All rights reserved. Subject to change without notice.

G-9664/H16-tb