

## ASHRAE 90.1, Title 24 & IECC Daylight Harvesting Code and Standard Compliance from a Single Source

As lighting makes up nearly 30 percent of our commercial electricity use, new codes and standards are being introduced on the local municipal, state and national levels to conserve energy and ensure a more efficient future.

### Leviton Solutions

With all the variables surrounding code compliance (location, project size, end user needs), selecting a system that will meet all requirements for its designed use can be overwhelming. Fortunately, you can rely on Leviton for quality, reliable, simplified solutions that meet all ASHRAE 90.1, 2012 IECC and Title 24 requirements for any sized project—from single office suites and classrooms up to high-rise mixed use buildings and school campuses. As we prepare for the future of energy usage and lighting system design, trust the company that has been innovating the way forward for over a century.

### Daylight Harvesting Requirements

Although the specifics and locations vary, ASHRAE 90.1, IECC and Title 24 share a common goal—create a more sustainable future by introducing new energy saving strategies into standard lighting designs. ASHRAE 90.1, IECC and Title 24 all address the need for daylight harvesting strategies.

### Daylight Harvesting

- Utilize the ambient light present in a space
- Dim or switch OFF lighting when sufficient ambient light is present or when the space is unoccupied
- Zones utilized to stagger the dimming and switching of lighting loads depending on their distance from ambient light sources, such as windows and skylights
- Mandatory in meeting Title 24 (Section 130.1[d]), ASHRAE 90.1 (Section 9.4.1.4 and 9.4.1.5) and IECC (Section C405.2.2.3)
- Leviton Solutions include Provolt™ Room Controller, Integrated Room Controller (IRC) and GreenMAX® Relay Control Panels

### Solution Assistance and Support

Not only does Leviton provide ASHRAE 90.1, IECC and Title 24 daylight harvesting solutions from a single source, we offer our customers an unparalleled level of resources to make the project planning process easier.

**Design Guides and Cookbooks** offer examples of recommended energy code compliant solutions for typical commercial applications. Visit [leviton.com/energycodes](http://leviton.com/energycodes) to download. For additional assistance, contact your Leviton sales representative.

**Dollars & Sensors** allows you to perform a full energy audit from the palm of your hand. Visit [leviton.com/dollarsandsensors](http://leviton.com/dollarsandsensors) to download the free app for iPhone, Android or BlackBerry and generate ROI reports, analyses, Bill of Materials and submittal packages from your desktop.

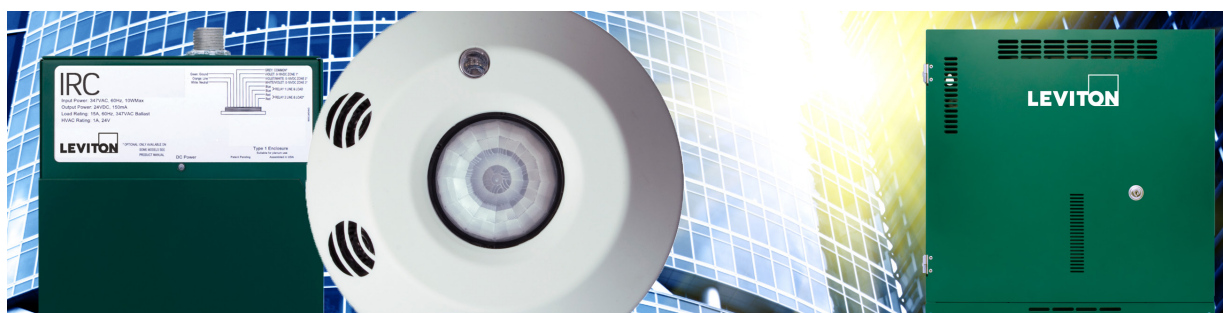
**Occupancy Sensor Layout Service** expertly creates occupancy sensor layouts directly on your CAD drawings with a List of Equipment at [portal.leviton.com](http://portal.leviton.com).

**LightLogger® Program** provides an accurate estimate of your energy savings potential with an exclusive payback analysis tool—go to [leviton.com/logger](http://leviton.com/logger).

**ez-Learn™** is online training from the comfort of your home or office, available 24/7 at [leviton.com/ezlearn](http://leviton.com/ezlearn).

**ASAP Lighting Design Software** is point-and-click software that allows you to quickly and simply design, specify and enter orders at [leviton.com/asap](http://leviton.com/asap).

**Dedicated technical support** at 800-959-6004.

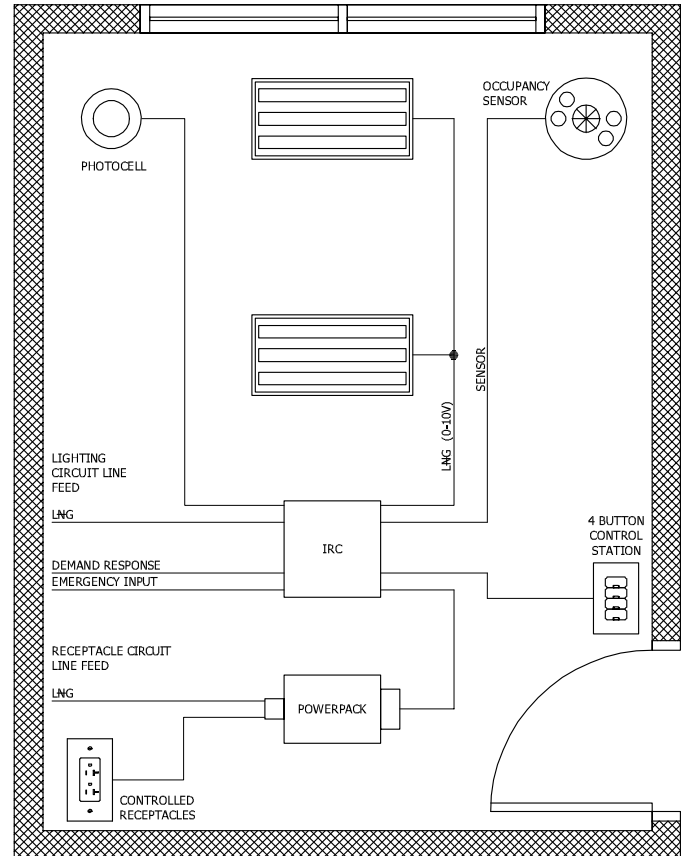


Control Type	2012 IECC	ASHRAE Standard 90.1 2010	California Title 24 2013
Automatic Daylight Control 	Control required in daylight control zones that provide these areas with separate control that is independent of the general lighting in the space, which can be stepped or continuous dimming	<ul style="list-style-type: none"> <li>Sidelit and Toplit areas must be separately controlled by a photocontrol, which can be stepped or continuous dimming</li> <li>Calibration cannot be located on the photocontrol</li> </ul>	<ul style="list-style-type: none"> <li>Photocontrols are required in all interior daylight spaces with at least 24 sq ft of glazing and at least 120W of installed lighting power in daylight and skylight zones</li> <li>Includes nearly every non-residential space with skylights or windows</li> <li>Secondary zones must have the same level of functionality as those in the primary zone</li> <li>Zones must be controlled separately</li> </ul>

## Featured Leviton Daylight Harvesting Solution

Two-Zone Solution featuring Integrated Room Control (IRC)

- Room-in-a-box, code-compliant solution that is easy to configure and available kitted with a factory configured sensor, photocell and 4-button switch
- AutoCal™ automatic photocell calibration and Ladderless Commissioning™, which self-determines the photocell target level and allows the user to make adjustments in the system's adjustment mode
- Easy automatic closed or open loop multi-zone daylight harvesting control design
- Meets ASHRAE 90.1 requirements of daylight harvesting using receptacle control, space control, lighting controls and automatic shutoff
- Meets IECC requirements of stepped, separate daylight control
- Meets Title 24 requirements of daylight harvesting using occupancy sensing control, dimming, task tuning, manual ON/OFF, receptacle control and area controls



### List of Equipment

	IRC Kit for 2 Zones, 2 Relays - includes IRC, sensor, photocell, and control station RCD20-102	1
	IRC for 2 Zones, 2 Relays MZD20-102	
	Multi-Tech Ceiling Mount Occupancy Sensor, 2000SF OSC20-M0W	
	Photocell, Indoor ODC0P-00W	
	Lighting Control Station RLVSW-4LW	
	OPP20 Super Duty Power Pack OPP20-OD1	1
	Marked "Controlled" Receptacles 16352-2PW	5

### Leviton Manufacturing Co., Inc. Energy Management, Controls and Automation

20497 SW Teton Avenue, Tualatin, OR 97062 **tech line** 800-954-6004 **fax** 503-404-5594

©2016 Leviton Manufacturing Co. Inc. All rights reserved. Subject to change without notice.