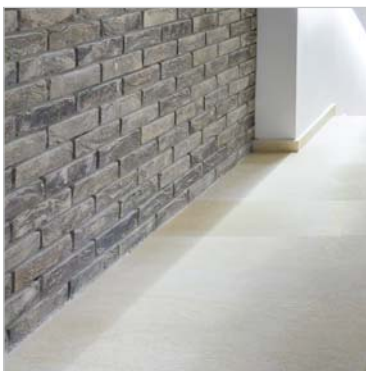
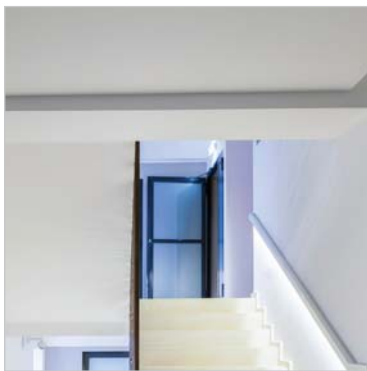
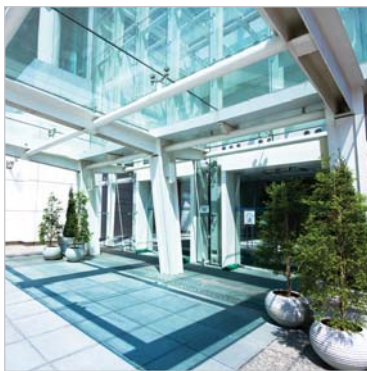


Smart Multifamily Solutions

A Sustainable Foundation for
MDU & Mixed-Use Applications







Smart Multifamily Solutions

Leviton has been providing the world with quality electrical devices for over a century.

At the heart of this longevity is the continual evolution of our products' performance, safety and sustainability-enhancing features.

At the same time, there has also been an evolution in the multifamily industry: from basic apartment complexes to amenity-rich, mixed-use buildings incorporating built-in and green technologies. Leviton lighting, energy management, audio, electrical and networking solutions take automation and energy efficiency to the next level.

Our comprehensive and innovative portfolio of over 25,000 products includes solutions for residential applications that satisfy the needs and preferences of today's tenant and the requirements of the latest energy codes and certifications, while counteracting rising operating expenses.

From reliable receptacles and plugs featuring shock prevention, tamper-resistance and watertight performance, to sophisticated dimmers and controllers that complement lifestyles and save electricity, to high-performance audio/visual and networking systems for indoor and outdoor entertainment — Leviton offers up our best ideas so you can make them yours.



A low-angle, upward-looking photograph of several tall, multi-story apartment buildings. The buildings are constructed of brick and feature numerous windows, some with white frames. The perspective creates a sense of height and scale. The entire image is overlaid with a semi-transparent blue filter.

Multifamily Residential – Ready for Everything

The modern multifamily and mixed-use property is a place where people live, work and play. Successful developers build and maintain an environment that is flexible enough to satisfy residents and tenants while achieving solid returns on their investment. Products engineered to provide performance and safety for a wide range of applications help form a solid foundation for long-term success.

Comfort, Convenience and Safety: Your Tenants Deserve the Best and It Starts Here.

The next generation of smart devices, including energy-efficient lighting controls that can be programmed and controlled from your smartphone, and intelligent, programmable thermostats that learn and adjust to your daily routine, give tenants the ultimate control over their own environment. Sought-after technology amenities include built-in home theater and distributed audio, convenient mobile device charging ports, and electric vehicle charging stations.



More than 30,000 non-fatal shock accidents occur each year... Each day, nearly 7 children are treated for electrical shock or burn injuries caused by tampering with a wall outlet.

Source: Electrical Safety Foundation International - www.esfi.org

Installing GFCI and tamper-resistant receptacles is an easy way to prevent people of all ages from suffering dangerous electrical shocks.



In the U.S., 50,900 fires each year are attributed to electrical failure or malfunction, resulting in 490 deaths and 1,440 injuries.

Source: Electrical Safety Foundation International - www.esfi.org

The U.S. Consumer Product Safety Commission estimates that AFCIs could prevent more than 50% of the electrical fires that occur every year.



77% of over 1,000 interviewed renters from across the U.S. said that it is important that their apartment is green. 72% said they are willing to trade off an important apartment feature (such as extra storage space or high ceilings) for green features.

Source: Green Apartment Offerings Wave II, Strata Research, May 2013

Energy management and lighting control systems, dimmers, timers, occupancy sensors and sub-meters can generate substantial energy efficiencies that can help earn LEED certification and control operating costs, while appealing to the public's increasing propensity for earth-friendly lifestyles.

SMART SOLUTIONS FOR GREEN LIVING

Twenty-first century multifamily development must be energy efficient and sustainable in order to attract residents and tenants, satisfy increasing standards, and remain competitive. Leviton is a leader in meeting today's energy codes with easy-to-install devices and systems that reduce utility bills and provide convenience and safety enhancements via automation. Our diversified line of innovative solutions is supported by nearly 1,000 patents and 90% of buildings in North America use our products. Leviton is the brand you can trust to deliver and perform, year after year.



Luxury Units 28

Bedroom and Bathroom 12

Kitchen and Dining Room 10

Commercial Areas 26

Garage and Laundry Facilities 20



>>> 25,000+ products

>>> Over a century of excellence

>>> Unparalleled technical support

>>> Most products UL listed, CE, CSA or NOM certified

>>> ISO 9000-9001 and Six Sigma company

14 Unit Entrance and Closets

8 Family/Living Room

22 Gym, Day Care Center and Outdoor Areas

16 Lobby and Common Hallway

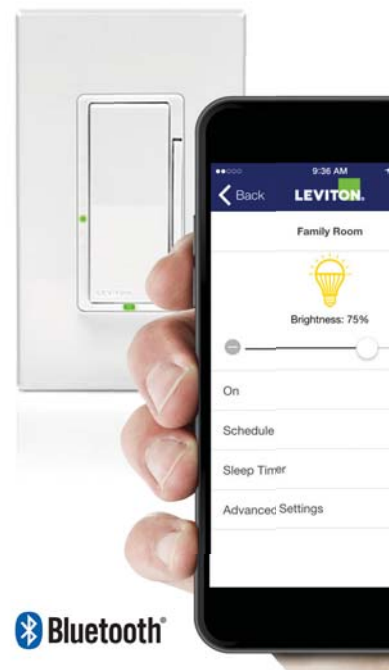
18 Mechanical Room



Family/Living Room

The days of getting up to change the channel on the console TV are long gone. Today we all expect our homes to be equipped with built-in technologies that enhance our enjoyment and comfort and give us more control over our surroundings.

As a primary space for congregating and relaxing, the living room must be functional and flexible enough to create the right environment for settling down for movie night with the family, hosting a cocktail party with friends, or spending the morning working from home. Amenities must be delivered in stylish form factors that satisfy modern design sensibilities. Leviton combines form and function to satisfy the most discerning, tech savvy resident with sleek Decora® devices, Bluetooth®-enabled lighting controls, music streaming and powerful multi-room audio.



Technology Enabled Entertainment

In the 21st century, home entertainment (HE) is all about seamless integration of home theater and distributed audio. Built-in recessed options suited for retrofitting as well as new construction enable state-of-the-art HE technology to be incorporated

unobtrusively into living spaces, with subtle elegance. With Leviton components, residents can enjoy music from multiple audio sources at the same time throughout the home, at different volume levels, and control it all via wall-mounted and mobile devices. Leviton speakers provide high definition sound for the ultimate home theater and listening experience.



Spec-Grade™ Sound In-Ceiling Speakers

The shift towards sustainable building necessitates the use of smart, energy-efficient devices such as dimmers and programmable thermostats. The Omnistat2 thermostat learns the heating/cooling patterns of your home and provides precise digital control over your HVAC system. Leviton also offers a broad selection of dimmers in a variety of designs including the Decora® Digital Dimmer with Bluetooth® Technology that lets you program and adjust lighting with your mobile device within in the home.

Surge Protective Receptacle

Surge Receptacles will help to protect your sensitive electronic equipment against damage from power surges and lightning strikes.



Decora® Digital Dimmer with Bluetooth® Technology

A dimmer and timer in one smart device for wireless lighting control within a 30-foot* range without the need for a hub, gateway or Internet connection. On-screen menu options enable control of lights from a smartphone or tablet. Compatible with the latest in advanced energy-efficient bulb technology.

*Range may vary depending on installation conditions including the configuration of walls and location of obstacles.



Decora® Tamper-Resistant Receptacle

Prevent electrical injuries from attempts to insert foreign objects into receptacle mandated in all residential housing.

Spec-Grade™ Sound In-Ceiling Speakers

Exceptional audio performance and value in a speaker featuring AeroNylon tweeters and Kevlar®-composite woofers for exceptional clarity, detail and impact. Paintable, acoustically transparent speaker grilles blend with any décor.

Omnistat2 Thermostat

Latest generation learning thermostat combines precise control over HVAC system with automatic, intelligent adjustments for maximum comfort and savings.



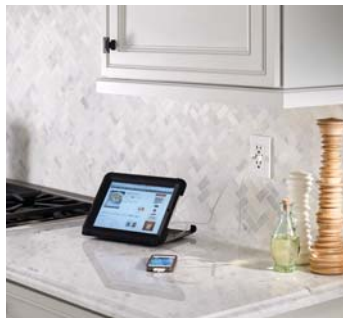
Hi-Fi™ 2 4x4 Distributed Audio System

Compact and powerful 4-source, 4-zone audio system distributes music throughout the home. Free iOS app for selecting music and controlling volume plus optional Bluetooth® connectivity lets you share streaming or stored music.

Recessed Duplex Receptacle/QuickPort® Combo and Entertainment Box

Two solutions for keeping unsightly cords out of sight, both Two-Gang Combination Device and Recessed Entertainment Box can be used behind wall-mounted TVs.





Kitchen and Dining Room

As the heart of the home, residents expect the kitchen to be functional, safe and, of course, stylish. This extends from the premium appliances to the recessed and task lighting—as well as to the switches and receptacles that are used to power them all.

Multitasking is a key strategy for coping with the daily demands of our hectic lifestyles and residents truly value devices that serve more than one purpose. Leviton's extensive line of combination devices incorporate many useful, yet unexpected features such as mobile-device charging ports and auto-on guide lights. Leviton lighting controls are compatible with the latest lighting technologies: enabling designers to utilize bold, modern fixtures made for energy-saving LED bulbs.



Safety in the Heart of the Home

People, water and electricity are in close proximity in the kitchen. The inherent dangers of this situation make safety products a priority in this space. Leviton receptacles offer multiple safeguards including tamper resistance, GFCI protection against shocks, and AFCI protection against fires.

A kitchen equipped with Leviton receptacles and lighting controls offers the ultimate in convenience while helping to prevent accidents. Receptacles with integral guide lights provide modest illumination for improved safety at night. Others feature ports for charging the mobile devices that are essential to our daily lives.

Around kitchen counters, where both electricity and water flow,

receptacles that interrupt power to prevent shocks provide an essential measure of security.

Sleek full-range Decora® dimmers give homeowners control of adjusting the light level for everything that happens in the heart of their home. Leviton's coordinating Decora® devices can be ganged together for maximum utility and convenience and come in multiple color options.

SmartlockPro® Dual Function AFCI/GFCI Receptacle

The SmartlockPro® Dual Function AFCI/GFCI Receptacle offers shock and fire protection in one smart device to help improve personal and home electrical safety. The device is a National Electrical Code® compliant option for AFCI/GFCI protection in residential kitchens and laundry areas.



Decora® USB Charger/Duplex Tamper-Resistant Receptacle



Decora® Rocker Slide Universal Dimmer

Integrates ON/OFF rocker with slender slide bar for precise, full-range control of incandescent, halogen, dimmable LED and dimmable CFL bulbs. Features contemporary design and seven color options.

Decora® USB Charger/Duplex Tamper-Resistant Receptacle

Multifunction device that combines two standard wall receptacles with two convenient USB charging ports. USB port is compatible with smart/mobile phones, tablets, gaming devices, e-readers and more.

Decora® Tamper-Resistant Receptacle/LED Guide Light

Two-in-one device features a tamper-resistant receptacle and a guide light. A sensor automatically turns ON and OFF the LED light based on the ambient light level in the room.



Range Receptacle

Straight blade receptacle specifically designed to handle high power electric ranges over a long service life. Built from durable thermoplastic and available in 30, 50 and 60-amp flush, surface and panel-mount models.

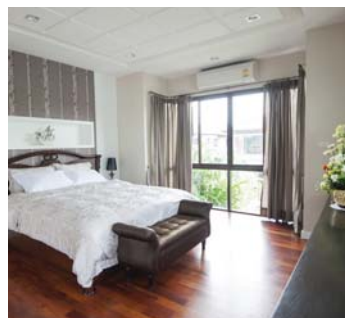




Bedroom and Bathroom

The bedroom and bathroom, must exude comfort and safety while also accommodating the technologies that are so ever present in our lives. Your residents will rest easy knowing that their home meets current electrical safety standards and is wired for optimum connectivity.

Leviton offers a wide range of devices featuring our hallmark Decora® brand that coordinates and complements any decor. Take the time to design for today's discerning tastes by choosing Leviton's modern line of switches, dimmers, receptacles and sensors.



Rest Easy with Leviton Quality



SmartlockPro® AFCI Receptacle

When it comes to safety Leviton never compromises. Our tamper-resistant receptacles and GFCIs meet all NEC® requirements for safety and performance. Safeguards include fire-preventing AFCI functionality, tamper-resistance, self testing, and guide lights for visibility. For convenience, automated features such as humidity-based ON/OFF fan operation and LED illumination based on ambient light are also built in.

In-home connectivity for business and pleasure is no longer considered a luxury; it's a necessity. Leviton's QuickPort® connector system allows users to mix and match for any combination of data, video, audio and voice lines.



QuickPort Connectors and Wallplates

The QuickPort® System allows you to create the perfect mix of voice, data, video and audio connections. Category-rated copper, fiber, and AV QuickPort® connectors are compatible with any QuickPort® wallplate or insert.

SmartlockPro® AFCI Receptacle

Helps reduce likelihood of an electrical fire by detecting hazardous arc-faults and responding by interrupting power.



SmartlockPro® GFCI/LED Guide Light

GFCI protection teamed with LED guide light to help light the way in the dark. A photo sensor turns the LEDs on and off based on the ambient light in the room.

Decora® Humidity Sensor and Fan Control

Continuously monitors the air in a room and automatically turns on the ventilation fan when it detects a rise in humidity. Features easily adjustable settings for sensor sensitivity, humidity level, and automatic time out.

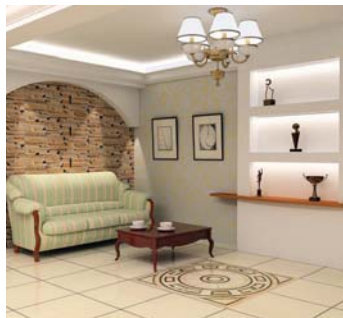
Decora® Switch/LED Guide Light

Attractive single-pole switch and LED guide light is handy when space is limited but extra illumination is needed. Energy-smart LED uses less than 1 watt of electricity.



Decora® Sureslide Universal Dimmer

Smooth full-range dimmer for dimmable LED, dimmable CFL, incandescent and halogen bulbs. Contemporary ON/OFF rocker switch preserves the last light level set.



Unit Entrance and Closets

For safety and aesthetics proper illumination is appreciated everywhere, including often overlooked areas such as closets and entrances. Leviton offers guide lights to help keep spaces adequately lit, automatic lights ON switching for hands-free mobility, automatic lights OFF for additional energy savings, and even scheduled switching. The elegant style of polished, modern Decora® switches and receptacles is a welcome addition to any room. Attention to this type of detail is one of the secrets to designing a property that's a cut above the rest.



LED Ceiling Occupancy Sensor

Combines an energy efficient LED bulb with a motion sensor for hands-free convenience that turns the light ON automatically when the closet is opened and OFF after three minutes of inactivity.

Welcome Home with Leviton



Decora® LED Guide Light

Decora® switches and receptacles make a strong first impression as they stand the test of time. Yet there is so much more to Leviton... Our Decora® occupancy sensors coordinate perfectly and are a simple and economical way to maximize energy savings and comply with codes. Automatic switching based on occupancy status ensures lights are ON when they should be and OFF when not needed. Not only is this convenient, it also adds an extra measure of security.



Decora® Rocker Switch

These tried-and-true switches are legendary for their streamlined elegance, smooth operation and long-term trouble-free service.

Decora® LED Guide Light

Guide light turns ON and OFF automatically based on light patterns detected by built-in sensor. Great for use in hallways and stairwells, it uses less than one watt of electricity, making it a smart choice for energy savings.

Home Networking

No modern multifamily project would be complete without the integration of entertainment and communication systems. The closet is the perfect discreet location to install the nerve center of the structured wiring network, a Leviton Structured Media Center, which houses and protects audio, video, voice and data distribution. Media centers offer an economical value added feature that allows tenants to connect anywhere in the residence with: innovative powering options, enterprise-grade connectivity solutions, and availability in custom and standard configurations.

From the moment you enter a unit to the moment you leave, Leviton devices are there when you need them.



Structured Media Enclosures

Provides a convenient termination location for wiring home runs from wall outlets and creating a distribution point for voice, data, audio and video applications.

Universal Occupancy Sensor

Provides optimal management of lighting with automatic ON/OFF switching plus manual off. These energy-saving sensors control LED, CFL, incandescent, electronic and magnetic low voltage loads.



Structured Media Components

Voice, data, audio and video modules that conveniently mount vertically or horizontally within Structured Media Enclosures



Twist & Mount Data Patch Panel Cat 6 & Cat 5e



CATV/HDTV Video Modules



Gigabit 4-port Wireless Router



Versatile, Integrated Power Supply



Lobby and Common Hallways

Lighting design in common spaces encompasses more than selecting the right LED down lights or dramatic pendant fixtures; there are also practical considerations. Proper illumination is vital to the safety of residents, visitors and staff—especially in high traffic areas such as lobbies and common hallways. Although a lack of illumination can certainly pose security risks, too much light can be visually disruptive not to mention wasteful. Leviton lighting control devices and systems can maintain the ideal level of illumination by adjusting to a variety of inputs including occupancy status, ambient light, and time of day.



Where Practicality and Aesthetics Intersect

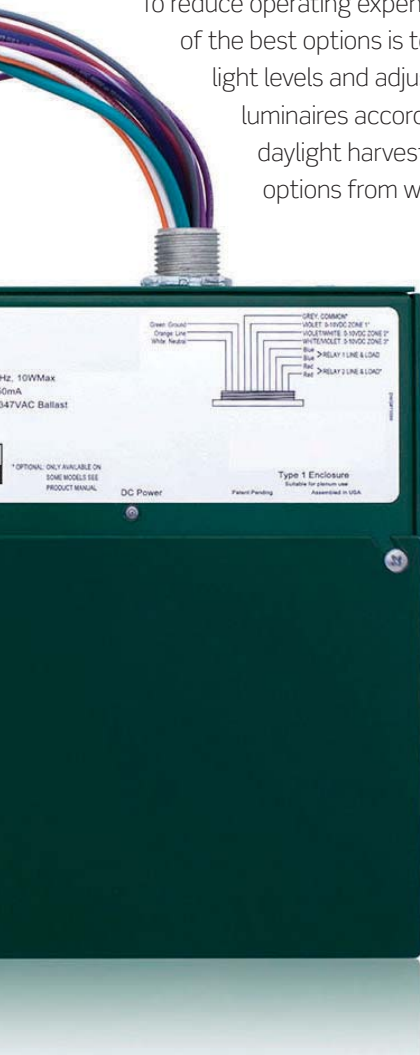
The first step through the main entrance sets the tone. Lighting design that incorporates functions such as scene lighting plays an important role in defining character and contributing to the overall drama of a space by highlighting architectural elements as well as artwork.



Provolt™ All-In-One Occupancy Sensor

Leviton offers a variety of devices and systems including occupancy sensors that switch and dim individual lighting loads, architectural controls like the D4000 for scene lighting, and multi-component lighting control systems with sophisticated features such as the IRC and Sector® systems.

To reduce operating expenses through energy savings one of the best options is to use photocells to sense natural light levels and adjusting decorative and functional luminaires accordingly. Leviton is a leader in daylight harvesting technology, with many options from which to choose.



LevNet RF™ Self-Powered Wireless Occupancy Sensor



Ideal for retrofit applications, provides ON/OFF light switching based on occupancy status without the need for batteries or wiring. Built-in solar cells use ambient light to power sensors for up to 48 hours in total darkness.

Provolt™ All-In-One Occupancy Sensor

Combines a line voltage occupancy sensor, power pack and photocell into a simple all-in-one energy management solution with true daylight harvesting capabilities. Self-contained design eases installation.

Dimensions® D4000 Architectural Lighting Controls

The D4000 combines ease of operation, configuration and installation with a wide range of entry stations and accessories for a powerful and flexible solution. Can be used as a standalone system or within a networked environment.



SECTOR® Lighting Control System

An expansive system for distributed control over common areas throughout an entire property that combines several energy saving technologies (occupancy sensing, daylight harvesting and dimming) into one conveniently integrated system.



Integrated Room Control (IRC) Daylight Management System

Simple and cost-effective solution that complies with energy codes with high performance lighting control in a single, easy-to-install package. Provides dimming, daylight harvesting (via additional components), demand response, plug load control, and partial-on and partial-off control. A single-gang Decora® device provides convenient manual control.



Mechanical Room

Power and telecommunications network systems converge in the mechanical and electrical rooms your staff accesses on a daily basis. Making the right choices for these critical hubs goes far towards providing a reliable platform for key building systems while maximizing energy efficiency and control. A solid infrastructure for maintaining peak operational performance in residential, common-use and maintenance areas utilizes highly reliable relay controls, submeters, heavy-duty switches, and surge protective devices from Leviton.



The Key to Reliable Building Operations

Power quality is vital to the sustainability of the infrastructure upon which the most basic services, as well as sought after amenities, rely. Leviton's surge-protective panels defend against damaging voltage transients caused by lightning, utility capacitor bank switching, and internally generated disturbances such as motor load switching.

Whether working towards LEED certification, marketing your property as sustainable or simply seeking the savings associated with green technologies, energy control and monitoring that integrates with building management systems are essential.

Leviton relay control systems offer a building-wide approach to centralized lighting control, programming and

monitoring. The GreenMax® system provides a single solution in place of a separate time clock, cabinet, terminal blocks and contactors—for reduced labor, material and maintenance costs. VerifEye™ Series submeters provide real-time energy usage information to measure, monitor and manage operations so you can improve cost allocation and the bottom line. Precise measurement and verification also allow for a previously unattainable degree of accuracy in tenant billing!

GreenMax® Relay Control System

Complete lighting energy management platform combining the functions of relay systems, daylight harvesting and demand control into a single, modular system.

GS and G6 Series LED Linear Fixtures



Powerswitch® Safety Disconnect Switches

Heavy-duty enclosed switches provide safe, reliable control over mechanical systems by cutting power to the circuit for equipment servicing. These watertight and dust-tight devices withstand higher short-circuit currents than manual motor controllers.

GS and G6 Series LED Linear Fixtures

GS and G6 Series linear LED lighting fixtures are durable and robust, designed with maximum safety in mind. With the most compact footprint in their class, they fit in confined spaces (such as mechanical rooms) where conventional luminaires will not.

AC Manual Motor Controllers

Provide safe, reliable manual ON/OFF switching of a variety of motor loads up to 600V AC and 20HP. Typically used with heavy equipment such as pumping machines and air compressors.



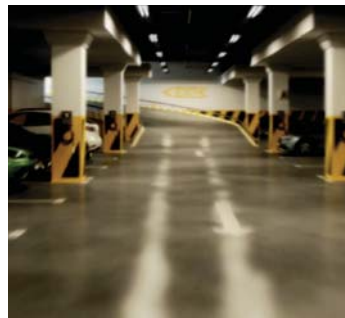
VerifEye™ Series 3500 Submeter

Features advanced communication protocols to enable tracking, monitoring and verification of real-time energy use and easy building management system integration.

Surge Protective Devices

Designed to reduce the random energy surges of voltage transients and electrical noise on the power supply line.





Garage and Laundry Facilities

To attract the eco-conscious tenant you've got to stay ahead of the curve and as the use of electric vehicles increases so will the desire to provide a convenient place to charge them. Installing Evr-Green® charging stations gives residents with electric vehicles the convenience of charging at home, while helping developers meet their sustainability initiatives and attract tenants who value a low carbon footprint. Another eco-friendly technology Leviton offers for use in garages and laundry rooms is occupancy sensors, which save electricity while enhancing safety through hands-free illumination.

Evr-Green® Electric Vehicle Charger

Compatible with all major auto manufacturers' electric vehicles (SAE J1772 compliant) and comply with all industry standards. Leviton EVSEs are available in a variety of configurations to accommodate virtually any MDU parking area.



Future Proof with Green Technology

The convenience and safety benefits of automated light switching via occupancy sensors is especially valuable within garage and laundry facility settings. This smart technology prevents residents from ever having to experience the fear

and uncertainty of a dark garage on your property—or from struggling to reach a light switch with arms full of shopping bags or a laundry basket.

EV charging stations are a win-win for the forward-thinking developer looking to attract eco-conscious tenants and to charge a premium. Even if prospective tenants don't have electric vehicles (yet), having this type of on-site amenity will surely appeal to those who value an earth friendly lifestyle, especially in green lease situations.

Leviton's Evr-Green® charging stations provide convenient onsite charging of any electric vehicle sold in North America or Japan. They also incorporate a ground monitor interrupter circuit and are UL Listed to ensure the highest level of safety.



Fixture Mount Occupancy Sensor with Light Sensor



SmartlockPro® GFCI with Audible Trip Alert

When a condition exists causing the GFCI to trip, residents and maintenance staff will be alerted by the sound of an audible alarm.

Fixture Mount Occupancy Sensor with Light Sensor

A reliable and cost-effective energy saving solution for applications with high ceilings that turns lights ON and keeps them ON while movement is detected. Provides options for daylight harvesting, dual relay, alternating relay, bi-level control, low voltage, cold storage and 480V.

Heavy Duty Locking Receptacles

Engineered for maximum performance and resistance to impact and harsh chemicals. Heavy-duty power contacts provide superior electrical performance under extreme conditions. Available in a variety of configurations including single, duplex, corrosion resistant and power interrupting.



Black and White® Plugs and Connectors

Industrial grade devices with nylon bodies resist impact, corrosion and chemicals for safe and reliable power connections. These devices are available in straight blade and locking configurations and are suitable for rough usage in demanding garage and laundry applications.



Box Mounted Occupancy Sensors

Commercial grade wall switches that respond to motion by turning lights ON and maintaining illumination while the coverage area is occupied. Features vandal-resistant Fresnel lens.





Gym and Daycare Center

The 21st century multifamily and mixed-use property offers more than a place to reside; it offers a lifestyle. Two of the most sought-after lifestyle amenities are the 24-hour gym and children's daycare center. When executed well these spaces can be extremely valuable to your tenants, making each unit more profitable and helping you retain residents and tenants longer.

Creating the ideal atmosphere throughout the day and night in these public spaces means maintaining comfortable levels of heating, ventilation and illumination. Leviton's Lumina Management System enables touchscreen and remote monitoring and control of all related devices and equipment.

There's no better way for your property managers to keep it all running smoothly.



Devices Built to Withstand High Activity

Both resident gyms and daycare centers require durable devices that withstand heavy usage and are designed to prevent tampering, especially in areas where children spend extended periods of time. Leviton's metallic receptacles and switches are designed for safety for all ages with features

including keyed switches and covers. Coordinating metal wallplates blend with the industrial décor of a typical fitness center and antimicrobial models help hinder the spread of germs wherever they are installed. Treadmills and other gym equipment can be plugged into Leviton's brushed nickel floor box assemblies for an overall harmonious look for all to enjoy.



Tamper-Resistant Floor Box Receptacles



Metal Wallplates

Leviton metal wallplates are designed for use with traditional Leviton devices and complement the industrial look of a typical gym. Built to withstand heavy traffic and resist corrosion in humid and wet locations, such as shower areas and saunas.



Lumina Gateway

Provides wireless energy management and remote access utilizing wireless sensors and devices to control temperature, lamps, fans, pumps, and third-party window coverings. This affordable system features scheduling event logic; connection to up to 40 wireless two-way sensors; and free email or SMS text notification based on event, apps for remote access, and setup software.



Antimicrobial Decora® Switches and Wallplates

Sleek, familiar devices made even better with an additive that reduces bacteria growth on frequently touched surfaces between normal cleanings.

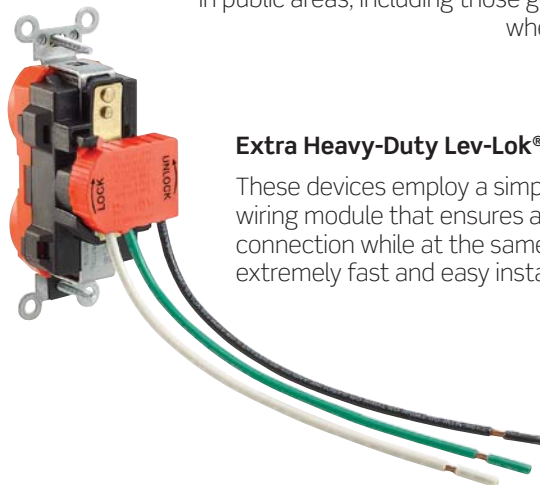
Tamper-Resistant Floor Box Receptacle Assemblies

For low profile, in-floor receptacle installations, our Floor Box Assemblies are the perfect fit. Available in both 15 & 20 Amp configurations, these devices are suitable for wood frame construction with carpet and wood finished flooring.



Tamper-Resistant Key Locking Switches

Two types of locking toggle switches to prevent ON/OFF switching with mated key for tamper-resistant protection in public areas, including those geared towards locations where children are present.



Extra Heavy-Duty Lev-Lok® Receptacles

These devices employ a simple twist-and-lock wiring module that ensures a safe and reliable connection while at the same time providing for extremely fast and easy installation.



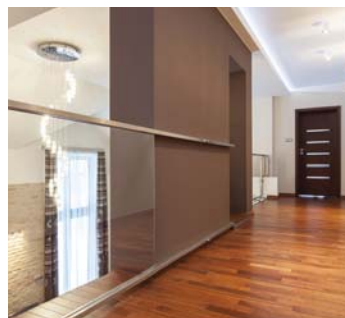
Atrium and Outdoor Areas

Smart developers step into the light by adding private outdoor spaces within which residents can relax and socialize. It is just the sort of value-added amenity that appeals to the prospective residential and commercial tenant looking for a better quality of life.

Of course the outdoors does present special challenges for control and entertainment devices and systems. Devices must be flexible enough to adjust to daily and seasonal changes and rugged enough to withstand exposure to rain and wind and all they bring with them. Leviton has solutions designed for use outside that perform reliably over many years with minimal maintenance and unparalleled tech support.

EZ-MAX® Plus

A comprehensive yet easily installed energy management solution for stand-alone outdoor relay control. Low-voltage inputs allow connection to photocells, occupancy sensors, low-voltage switches and digital switches. Features oversized buttons for easy programming and built-in astronomical time clock and scheduler.



Outlast, Outperform, Outside



Raintight While-In-Use Covers

From lighting controls and electrical devices to audio systems, Leviton outdoor solutions offer safety, performance and energy savings. Timed and motion-activated lighting controls ensure sufficient illumination for enjoying outdoor spaces at any time of day and for enhancing security. Motion sensors and EZ-MAX® Plus relay controls can work together in a standalone energy management system, keeping lights and other load off when there is no need for them. Leviton audio distribution modules, loudspeakers and volume controls

connected to multiple music sources can be used to create distinctly different atmospheres throughout multiple areas.

Of course your property could not run smoothly without your maintenance and operations staff. Leviton receptacles and while-in-use covers provide them with safe, secure power connections to entertainment systems, holiday lighting, landscaping equipment, and more.



SmartlockPro® Weather-Resistant GFCI

NEC® compliant outdoor grade receptacles provide a local power source with the highest level of ground fault protection. Combine with Raintight While-In-Use Covers for superior performance when exposed to the elements.

Raintight While-In-Use Covers

Weather-resistant raintight covers are ruggedly constructed to seal out moisture, dust, debris and insects while providing easy access to receptacles. Available in telescoping and metal versions.

Outdoor Occupancy Sensor

Passive Infrared (PIR) outdoor motion sensors keep lights ON when movement is detected and ambient light is insufficient. Available with various coverage patterns, with or without integral lampholder.



Load Control Module

20A relay module to control power consumption for high wattage loads such as pool pumps, fountains, exterior lights, and 3HP and 2HP motors.

Hi-Fi™ 2 8x8 Distributed Audio System

Broadcast music across numerous outdoor spaces with this powerful 8-source, 8-zone audio system.

Free iOS app for music selection and volume control and optional Bluetooth® connectivity enables distribution of streaming or stored music. Volume source controls and remote input modules connect via Cat5e cable.



Leviton Architectural Edition Powered by JBL® Outdoor Speakers

Leviton's all-weather loudspeakers wall mounted in a sheltered location provide the audio quality you've come to expect from JBL®. They are fully weatherized down to their professional-grade grilles and input connectors. High-power (200W) amplification produces realistic bass with low distortion.





Commercial Areas

The most successful mixed-use properties are adaptable: easily transitioning to the needs of new business tenants and market trends. That's why it is essential for commercial areas to be equipped with lighting controls and devices that are both flexible enough to adapt to changing needs and tough enough to perform reliably, year after year.

Successful commercial operations, the type that become long-term tenants, occupy spaces that optimize both employee productivity and the customer experience. Restaurant dining rooms and retail showrooms require scene lighting for ambiance, as well as to accommodate daily business routines such as after-hours cleanup. Commercial kitchens need rugged electrical devices designed for high-moisture conditions where water, gas and electrical service are in close proximity. Whether a property contains restaurant, retail or office space (or all of the above), Leviton has the right mix of high-performance solutions to stand the test of time.



Build a Platform for Success in These Challenging Spaces



DuraPort® Industrial Network Connectivity

Leviton power and network connectivity devices are built to withstand the rigors of daily use in a commercial setting and to contribute to the safety of all those who come in contact with them. Both Wetguard® plugs and connectors and DuraPort® patch cords and connector housings are designed and constructed to resist moisture, dust, corrosion, acids, detergents, oils and vibration for long-lasting performance that just won't quit.

Lighting commercial areas presents challenges as well as opportunities. The challenge is to provide easy-to-use manual and automated control to create the ideal atmosphere for staff and customers throughout the entire day. The compact Sapphire™ touch screen works seamlessly with your choice of Leviton lighting control system and commercial light fixtures. Renoir™ dimmers add convenient manual control over individual loads. Incorporating manual and automated dimming

through daylight harvesting presents an opportunity to minimize electricity consumption while achieving superior aesthetics. Everyone wins with dimming.



Sapphire™ LCD Touch Screen

This 7-inch touch screen offers a customizable user interface and the convenience of native control over integrated commercial lighting control systems. For use with Leviton GreenMAX®, Sector®, Dimensions® 4000 and Dimensions® 8000 systems. Installs in a standard 4-gang wallbox.



Wetguard® Plugs and Connectors

Watertight industrial grade wiring devices built for use in wet and corrosive environments and to withstand physical abuse. Meet IEC and NEMA watertight and dust-tight ratings and backed by a lifetime warranty.

DuraPort® Industrial Network Connectivity

Twist-lock connector housings, wallplates and patch cords provide watertight (IP67 rated) copper connectivity to safeguard critical data from rough conditions in demanding commercial areas. DuraPort® products are compatible with Leviton QuickPort® jacks and are sold as complete outlet kits.

Self-Test GFCI Receptacle with Pilot Light

Patented SmartlockPro® outlet detects and prevents against line-load reversal miswiring and prevents resetting when ground fault protection has been lost. High visibility LED provides visual indication of power status, making it ideal for use where receptacles are not easily accessible.



Renoir II™ Architectural Dimmer

Highly functional yet elegant architectural dimming controller with slide or rotary dimmer and ON/OFF button. Custom colors and finishes available, as are made-to-order wallplates to accommodate 5 to 10 dimmers.



Luxury Units

When it comes to the penthouse or other luxury living spaces only the best will do. Although the natural focus is on large open floor plans and premium finishes, developers should not overlook the functionality and aesthetics of the devices that provide access to built-in residential lighting, and security systems. Discerning residents demand nothing less than best-in-class technology, wireless functionality and maximum control over every aspect of their indoor environment.

Expectations are high for today's luxury properties and to capture this market you must meet these expectations down to the last detail.



The Ultimate in Control

The wireless Vizia RF+® system seamlessly enhances home lighting in three distinct ways: scene control, zone control and timing control. This functionality provides residents with the



Vizia RF+® Scene Controller/Switch

unique ability to program and regulate lighting loads and ambiance with the touch of a button via wireless RF technology. OmniTouch 7 is another option for sophisticated control of lighting in addition to HVAC, audio and security systems. After all, incorporating security features such as surveillance cameras and automated light switching into a luxury

unit is a must-have for those who have a lot to protect. When only the best will do, remember that Leviton designs and manufactures a wide range of products for turning the ordinary into the extraordinary!

Leviton Architectural Edition Powered by JBL® Home Theater Speakers

An “array design” allows these exceptional speakers to be used as both a low-profile installed front center channel speaker (and rear center in a 6.1 system) and as an extreme performance left/right speaker. Pure titanium dome tweeter and polymer-coated aluminum woofers maintain musical accuracy and clarity. Acoustically transparent, paintable baffles and grilles.



OmniTouch 7 Touchscreen

Capacitive touch device to control lighting, temperature, audio and security systems over Omni, BitWise or Lumina Gateway platform. High-resolution 7-inch display can be used to view IP surveillance camera footage and unlock wireless door locks.

Vizia RF+® Scene Controller/Switch

In place of a single switch or dimmer, install the dynamic and stylish Vizia RF+® Combination Controller. This multi-button combination switch/controller gives the user control of the local load as well as the benefit of scene and/or zone (area) control. Perfect for new build or retrofit applications.



Surge Protective Receptacles

Surge protective devices can be used individually or as part of a coordinated strategy to protect sensitive electronic equipment from the stress and degradation inflicted by voltage transients and power surges.

Vizia RF+® Dimmer Switch

Scene-capable dimmers fit into standard wallboxes and replace regular switches or dimmers to provide local and remote on/off/dim/bright control for incandescent, electronic low voltage and magnetic low voltage lighting loads.

Provide scene control capability when used with Vizia RF+® Scene Controllers.



BitWise AV Controller

Control all home theater components—including TVs, audio systems, Blu-Ray/DVD players, motorized shades and lighting—via a single customizable interface running on a tablet or smartphone.

From the Ground Up

Developers require comprehensive, cost-effective methods of moving from the drawing table to the ribbon cutting during every phase of the building process. Wiring devices and technologies designed for easy installation and years of maintenance-free operation take you one step closer to this goal. Whether new construction or retrofit, the ability to advance more quickly and efficiently to completion while delivering value-added features and a signature style is paramount to the bottom line. Leviton understands the challenges and delivers at every stage of the project.

For more information email us at mdu@leviton.com or call 1-800-323-8920.

Smart Service – Sustainable Technology

Leviton Customer Services

Phone / Email Support

Leviton Corporate Customer Service 1-800-323-8920,
Monday to Friday 8am – 7pm EST

- Fax: 1-800-832-9538
- Customerservice@leviton.com

Network Solutions Customer Service 1-800-722-2082,
Monday to Friday 9am – 8pm EST

- Fax: 1-800-767-5270
- insidesales@leviton.com

Leviton Technical Services

Phone / Email Support

Leviton Corporate Techline 1-800-824-3005,
Monday to Friday 8am – 7pm EST info@leviton.com

- Network Solutions Techline 1-800-722-2082
Monday to Friday 9:30am – 8pm EST appeng@leviton.com
- Lighting and Energy Solutions Techline 1-800-959-6004,
Monday to Friday 9am- 8pm EST meters@leviton.com
LEStechsupport@leviton.com

Online Knowledgebase: <http://Communities.leviton.com>

Obtain product related information from industry professionals and DIY homeowners on a wide range of products and services.

Live Chat

Communicate online with Leviton's technical service representatives about application and product-related questions.

- Corporate Technical Support –
Monday thru Friday 9am -7pm EST
- Network Solutions –
Monday thru Friday 9:30am-8pm EST

Network Solutions AE Live Program

Take your technical support call to the next level and troubleshoot face-to-face with a Network Solutions professional.

Cross Reference Tool on www.leviton.com

Simply type the part number into the search box on the home page, matches will be displayed on the Manufacturer Cross Reference tab.

E-Commerce Services • ecomm@Leviton.com

Electronic Data Interchange (EDI)

Reduce the cost and time of transacting business by leveraging Leviton's EDI capabilities. EDI documents include pricing, SPA credits, invoices, advance shipment notices, purchase orders and purchase order acknowledgments.

EZ-Biz

Utilize Leviton's on-line portal to check stock, order status, pricing, as well as place orders on-line in real time.

Vendor Managed Inventory (VMI)

Collaborate with Leviton to increase inventory turns and maximize inventory efficiency.

E-Invoicing

Go green and save paper with E-Invoicing. Receive email or faxed invoices within 24 hours of shipment.

Net Pricing

Access net price stock cards as an Industry Data Warehouse (IDW) subscriber.

Other Helpful Links

www.leviton.com/LESdesign - Save time and energy in the design process by utilizing our design tools and keep up to date with energy codes and mandates.

www.leviton.com/LESproducts - Find high-quality, cost effective, easy-to-implement lighting control solutions for any application.

www.leviton.com/LESquickpicks - Find all lighting and energy product documentation and software in one centralized location to make it easier to get the information you are looking for.

www.leviton.com/BIM - Incorporate Leviton connectivity images and added intelligence into your infrastructure design drawings with our library of free BIM objects.

www.leviton.com/HomeConfig - Get help designing your structured wiring network to serve today's connected lifestyles.

**Leviton Manufacturing Co., Inc.
Global Headquarters**

201 North Service Road, Melville, NY 11747-3138
+1 800 323 8920 +1 631 812 6000
info@leviton.com www.leviton.com

Leviton Manufacturing of Canada, Ltd.

165 Hymus Boulevard, Pointe-Claire, Quebec H9R 1E9
+1 800 461 2002 +1 514 954 1840
pcservice@leviton.com

Leviton S. de R.L. de C.V.

Lago Tana 43, México DF CP 11290, México
+52 55 5082 1040
lsamarketing@leviton.com www.leviton.com.mx

