

Indoor/Outdoor/All Weather Loudspeakers Powered by JBL®

Leviton Architectural Edition® Powered by JBL®



- Includes wall mount brackets that can be rotated, tilted, and angled towards the listener
- Speakers can be placed or mounted in the horizontal position

DESIGN CONSIDERATIONS

- Please note that while the JBL Control X is an all weather outdoor loudspeaker, it is not waterproof. These speakers should NOT be submerged or directly exposed to water, ice, snow or sustained moisture. Do not spray water into the speaker's rear port.

PHYSICAL SPECIFICATION

- Inputs: Gold-plated 5-way binding posts
- Dimensions (H x W x D): 9-1/4" x 6-1/2" x 6-1/4"
- (235mm x 165mm x 158.8mm)
- Weight: 5.8 lbs (2.63 kg)
- Color: Black (finish and grille color)
- Low Frequency Transducer: 5.25" (133mm polypropylene graphite-filled cone woofer
- High Frequency Transducer: 1" (25mm) CMMD® Lite dome tweeter/ High Definition Imaging Waveguide
- Sold in pairs

PERFORMANCE SPECIFICATIONS

- Recommended Amp Power: 20 – 100 Watts
- Frequency Response (-3dB): 90Hz – 20kHz (anechoic)
- Sensitivity: (2.83V@1m) 87dB
- Nominal Impedance: 8 Ohm
- Crossover Frequencies: 2300Hz – 12dB/octave

WARRANTY INFORMATION

For a copy of Leviton product warranties, visit www.leviton.com/warranty.

APPLICATION

The Leviton Architectural Edition All Weather Loudspeaker by JBL is an advanced indoor/outdoor loudspeaker system that allows you to enjoy your favorite music in remote locations around the home or in commercial spaces. Control X speakers can be used both inside for a home theater setup or in any outdoor or utility application where the specifications call for sound quality and clarity from a durable, flexible design.

These two-way speakers can withstand direct exposure to the elements in outdoor applications because they are fully weatherized right down to their professional-grade grilles and input connectors.

The best results are achieved and long-term performance improved by mounting any outdoor speaker in a sheltered location, such as under an eave or overhang. They are also ideal for indoor pools, atriums, and other large open spaces where enclosure speakers are desired and large-area coverage is needed.

FEATURES

- Rugged, weatherized housing protects against the elements
- Sleek, angled profile for a sophisticated, modern look
- Built for seamless integration with your system
- High Definition Imaging (HDI) waveguide provides astounding imaging, natural balance, and remarkable detail from any location

Leviton Manufacturing Co., Inc. Global Headquarters

201 N. Service Rd. Melville, NY 11747-3138 Tech Line: 1-800-824-3005 Fax: 1-800-832-9538

Leviton Manufacturing Co., Inc. Energy Management, Controls and Automation.

4330 Michoud Blvd., New Orleans, LA, 70129 Tel: 1-504-736-9810 Fax: 1-504-253-2954

Visit our Website at: www.leviton.com/emca

©2016 Leviton Manufacturing Co., Inc. All rights reserved. Subject to change without notice.

WALL-MOUNTING THE SPEAKERS USING INCLUDED WALL BRACKETS

Adjustable wall brackets are included for the JBL Control X speakers. The included brackets are for wall-mounting only. Ceiling-mounting these JBL Control X speakers is not recommended, regardless of the bracket used.

IMPORTANT SAFETY NOTE: Proper selection of mounting hardware not included herein, and proper assembly and installation of brackets, including, but not limited to, selection of appropriate weight-bearing support and bracket use with the specified speaker only is the exclusive responsibility of the customer. Manufacturer disclaims any liability for the selection of mounting hardware and/or bracket installation.

- A. Loosen and remove the molded nut (2) by turning it counterclockwise. Use the supplied metal bar (5) if necessary by inserting it in one of the holes on the molded nut (2).
- B. Pull the ball/shaft (3) out of the wall bracket (4).
- C. Slide the molded nut (2) onto the ball/shaft (3) with threaded opening facing the ball, and thread on the metal nut (1) all the way onto the ball/shaft (3), with the nut's (1) "knurled" surface facing away from the ball.
- D. Screw the ball/shaft (3) into the threaded 3/8"-16 insert (6) on the back of the speaker cabinet until it is fully seated against the bottom of the insert. Back out the ball-shaft assembly one half turn and tighten the nut against the speaker. If the ball and shaft assembly is not backed out before tightening the nut, performing Step G below may dislodge the threaded insert in the speaker housing and permanently damage the speaker.
- E. Tighten the "knurled" nut (1) using a crescent wrench until it is firmly seated against the back of the speaker and has fully locked the ball/ shaft (3) and the speaker cabinet together. Please note that once this nut is tightened, it may embed some marks on the back of the speaker where the attachment is made. However, these marks will be covered by the nut (1).

- F. The security cable (8) is provided as an additional measure to prevent the speaker from falling in case the speaker becomes detached from the wall bracket. One of the two lower screws (9) that attach the wall bracket (4) to the wall will need to go through the eyelet (11) at the end of the cord before going through the wall-bracket hole. Make sure that the screw head is at least 0.36" (approximately 3/8") or larger in diameter so that it can properly hold the backup cord eyelet (11).
- G. Mount the wall bracket (4) onto a wood stud on the wall, using #10, minimum 1", panhead wood screws. Make sure that all four screws are driven into the stud, not drywall. If the bracket needs to be mounted on drywall, the use of properly selected and installed wall anchors and screws is essential.
- H. Securely attach the other end (10) of the security cable (8) to the Control X by engaging it through the bar (12) on the back speaker, as shown in the illustration.
- I. Connect your speaker wire to the terminals (13) on the rear of the speaker. Be sure to leave enough cable if mounting speakers in horizontal position.
- J. Holding the speaker cabinet (7) with both hands, reinsert the ball portion of the ball/shaft (3) into the wall bracket (4).
- K. Hand-tighten the molded nut (2) while positioning the speaker for the intended orientation.
- L. Once the orientation of the speaker is finalized, use the metal bar (5) in one of the holes on the molded nut (2) and tighten securely.

DO NOT OVERTIGHTEN THE MOLDED NUT (2).

Leviton Manufacturing Co., Inc. Global Headquarters

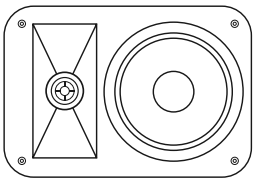
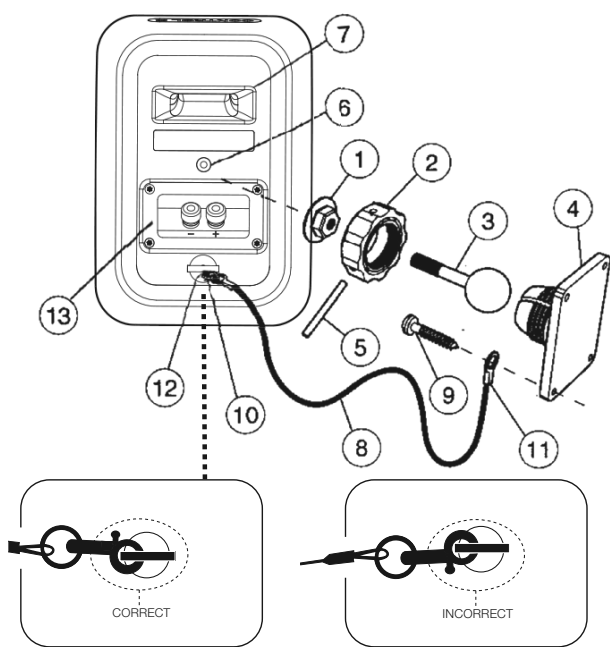
201 N. Service Rd. Melville, NY 11747-3138 Tech Line: 1-800-824-3005 Fax: 1-800-832-9538

Leviton Manufacturing Co., Inc. Energy Management, Controls and Automation.

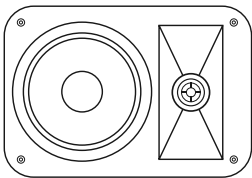
4330 Michoud Blvd., New Orleans, LA, 70129 Tel: 1-504-736-9810 Fax: 1-504-253-2954

Visit our Website at: www.leviton.com/emca

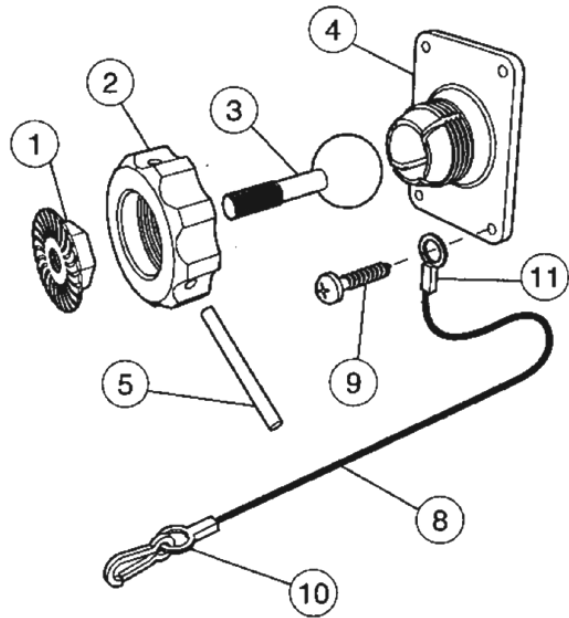
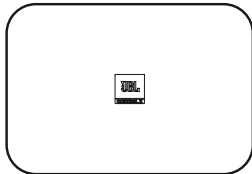
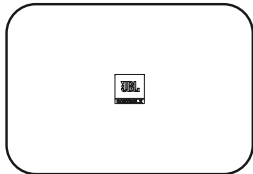
©2016 Leviton Manufacturing Co., Inc. All rights reserved. Subject to change without notice.



LEFT SPEAKER



RIGHT SPEAKER



**WALL-MOUNTING THE SPEAKERS USING
THIRD-PARTY WALL BRACKETS**

Each JBL Control X speaker contains a 3/8"-16 threaded insert on the back to facilitate the use of third-party wall brackets. Please consult your JBL dealer or distributor for recommendations. Note: Customer is responsible for proper selection and installation of appropriate third-party wall brackets.

DISTANCE BETWEEN EACH SPEAKER

For optimal stereo imaging, 6-8 feet (1.8m - 2.4m) is recommended between each speaker. If you require a wider space or distance, be sure to run a L + R (summed mono) signal from your amplifier or receiver to each speaker if your equipment offers this option.

ORDERING INFORMATION

DESCRIPTION	CAT. NO.
Pair of Leviton Architectural Edition® powered by JBL® Indoor/Outdoor/All Weather Loudspeakers	LAEAW-000

Leviton Manufacturing Co., Inc. Global Headquarters

201 N. Service Rd. Melville, NY 11747-3138 Tech Line: 1-800-824-3005 Fax: 1-800-832-9538

Leviton Manufacturing Co., Inc. Energy Management, Controls and Automation.

4330 Michoud Blvd., New Orleans, LA, 70129 Tel: 1-504-736-9810 Fax: 1-504-253-2954

Visit our Website at: www.leviton.com/emca

©2016 Leviton Manufacturing Co., Inc. All rights reserved. Subject to change without notice.

SAT-10102
REV SEP 2016