

# Sapphire™ Room Controller

Dimming and Daylighting with Low Voltage Inputs and Code Compliant Solutions for Large Spaces

## Incorporate dimming, occupancy/vacancy sensing and daylight harvesting from one central interface.

Combine scene control, scheduling and intuitive touchscreen functionality with code-compliant dimming, occupancy and/or vacancy sensing, and daylight harvesting with the Sapphire™ Room Controller. Low voltage inputs incorporate occupancy and vacancy sensors, photocells and other devices to send room state information to the Sapphire system, which allows the lighting to be adjusted accordingly. Full-range, smooth dimming as well as a multitude of scene and schedule settings can all be activated and adjusted from a central point of control, which also allows for manual overrides to accompany occupant needs.



### CHALLENGE

*Large facility desires scene and scheduling control as well as automatic dimming, occupancy/vacancy sensing and daylight harvesting.*

- Facility contains 0-10V LED lighting
- Project must be completed under budgetary and time constraints while still covering a large area
- Contains natural lighting elements including windows and skylights
- Must comply with IECC, ASHRAE 90.1, and 2016 Title 24, Part 6 occupancy/vacancy sensing, 0-10V dimming and daylight harvesting

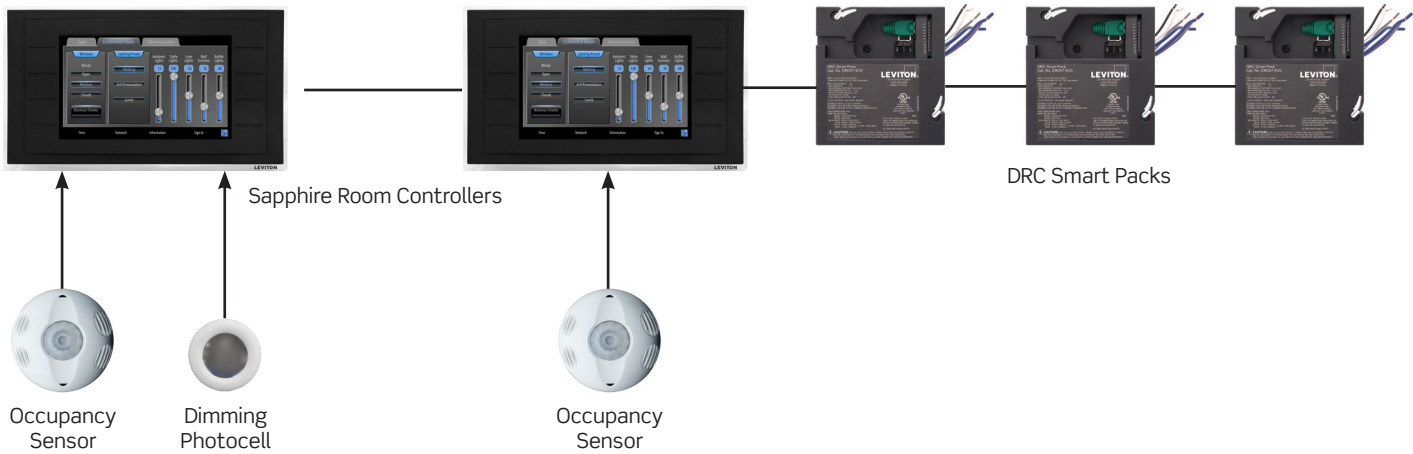
### SOLUTION

*Sapphire Room Controller allows for scheduling, dimming and daylighting in large-scale spaces by connecting occupancy sensors, photocells, and other low voltage inputs.*


- Provides full, smooth, continuous dimming and control capabilities for 0-10V LED fixture lighting
- Simplifies and speeds installation with simple LV inputs
- Photocell continually measures natural lighting in the space from windows, skylights, atriums, and other sources and signals the Sapphire system to adjust lighting accordingly for an evenly lit space
- Can be used to comply with IECC, ASHRAE 90.1, and 2016 Title 24, Part 6 occupancy/vacancy sensing, 0-10V dimming and daylight harvesting



SAPPHIRE ROOM CONTROLLER FOR LARGE SPACES



WHAT YOU WILL NEED

SAPPHIRE ROOM CONTROLLER FOR LARGE SPACES		QTY.
	<b>Sapphire Room Controller   TS007</b> Allows for room control, scheduling and customized scene settings through an easy-to-use touchscreen interface	2
	<b>Ceiling Mount Multi-Technology Occupancy Sensor   OSC20-RMW</b> Senses when occupants enter and leave a space and signals the Sapphire Room Controller accordingly	2
	<b>Dimming Photocell   ODC0P-D0W</b> Continually monitors natural light available within a space and signals the Sapphire Room Controller accordingly	1
	<b>DRC Smart Pack   DRD07-ED0</b> Enables switching and dimming of LED fixture zones, allowing for a distributed solution	3

For more information on which Sapphire solution is correct for your application, visit [Leviton.com/sapphire](http://Leviton.com/sapphire).

**Leviton Manufacturing Co., Inc. Energy Management, Controls and Automation**  
20497 SW Teton Avenue, Tualatin, OR 97062 tel 503-404-5500 fax 503-404-5600  
tech line (8:30AM-7:30PM ET Monday-Friday) 800-824-3005

**Leviton Manufacturing Co., Inc. Global Headquarters**  
201 North Service Road, Melville, NY 11747-3138 tel 800-323-8920 fax 800-832-9538  
tech line (8:30AM-7:00PM ET Monday-Friday) 800-824-3005

Visit our website at: [www.leviton.com/sapphire](http://www.leviton.com/sapphire)  
© 2018 Leviton Manufacturing Co. Inc. All rights reserved. Subject to change without notice.

G-10214B/F18-tb  
REV JUL 2018

