

ASHRAE 90.1 and Title 24 Parking Garage Control

Comply with energy codes and utilize advanced energy-saving features



NorthStar Outdoor Lighting Control System

WIRELESS, CODE-COMPLIANT CONTROL FOR PARKING GARAGE FACILITIES

The Leviton NorthStar Outdoor Lighting Control System is specifically designed to meet the needs of outdoor and partially outdoor facilities, including the unique safety and code compliance concerns of parking garages. Wireless system technology connected via a robust, self-healing mesh network makes installation and system management simple.

ASHRAE 90.1: Parking garage lighting zones must be controlled by a device that reduces power by 30% after 30 minutes of vacancy (20 minutes of vacancy in 2013/2016), and open exterior walls must utilize automatic daylight harvesting.

California Title 24: Occupancy sensors must reduce power with one control step between 20-50% of lighting power. No more than 500W of lighting may be controlled per zone, and automatic controls must turn lights to full-ON and be activated from all paths of egress

PROBLEM

Parking garage facility requires lighting control to meet local and national code mandates and improve area safety.

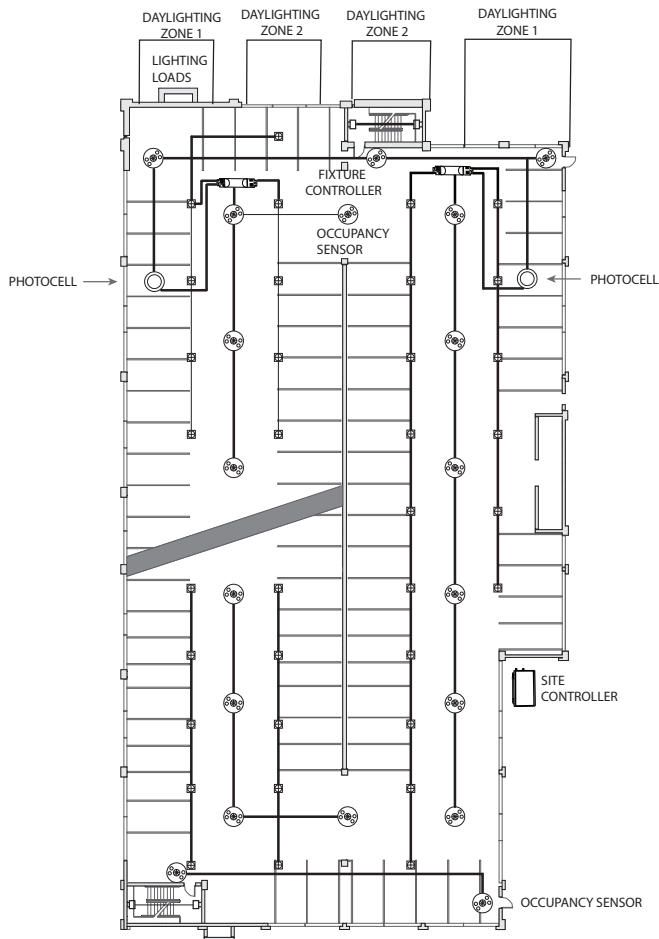
- Parking garage contains open areas and partial walls that allow daylight to enter the space
- Large areas in the garage are often unoccupied
- Must meet ASHRAE 90.1 and Title 24

SOLUTION

NorthStar Outdoor Lighting Controls manage parking garage lighting for energy savings and code compliance.





- Integrate photocells and time clock controls to measure ambient light in the space, and also ensure essential lighting remains on during nighttime hours—and off during daylight times
- Incorporate occupancy sensors for zone control, keeping empty areas off until occupants enter the space
- Meets ASHRAE 90.1 and Title 24 requirements for parking garage control

NORTHSTAR PARKING GARAGE CONTROL



Disclaimer: This document is for informational purposes only. Each project will have its own specific requirements for satisfying IECC, ASHRAE 90.1 and Title 24 code compliance based on a variety of factors. Other exceptions or details may apply. Review the code for specific requirements and/or consult with a professional advisor. Leviton Mfg. Co., Inc. is not responsible for any loss resulting from the use of any information found in this document. Solutions are subject to change without notice. For additional assistance, contact your local Leviton representative.

WHAT YOU WILL NEED

NORTHSTAR PARKING GARAGE CONTROL		QTY.
	Wireless Fixture Controller, 2 Zone OCF02-1RT <ul style="list-style-type: none"> Wirelessly controls lighting by responding to signals from the zone's occupancy sensors and photocells 	2
	Site Controller OC00G-00G OR OC00G-ENC <ul style="list-style-type: none"> Serves as the central hub for the NorthStar Outdoor Lighting Control System NOTE: A site controller must be installed within range of at least one of the nodes 	1
	Fixture Mount PIR Occupancy Sensor OSFHP-I4W <ul style="list-style-type: none"> Installs directly onto the parking garage lighting fixture to detect occupancy in a zone and dim lighting accordingly 	19
	Indoor Photocell ODC0P-0xW <ul style="list-style-type: none"> Continually monitors the level of daylight in a space and dims lights accordingly 	2

Leviton Manufacturing Co., Inc. Energy Management, Controls and Automation

20497 SW Teton Avenue, Tualatin, OR 97062 tel 800-736-6682 fax 503-404-5594

tech line (6:00AM-4:00PM PT Monday-Friday) 800-954-6004

Leviton Manufacturing Co., Inc. Global Headquarters

201 North Service Road, Melville, NY 11747-3138 tel 800-323-8920 fax 800-832-9538

tech line (8:30AM-7:00PM ET Monday-Friday) 800-824-3005

Visit our website at: www.leviton.com/northstar

©2017 Leviton Manufacturing Co. Inc. All rights reserved. Subject to change without notice.